



# HOLIDAY PARTY



Operator Manual





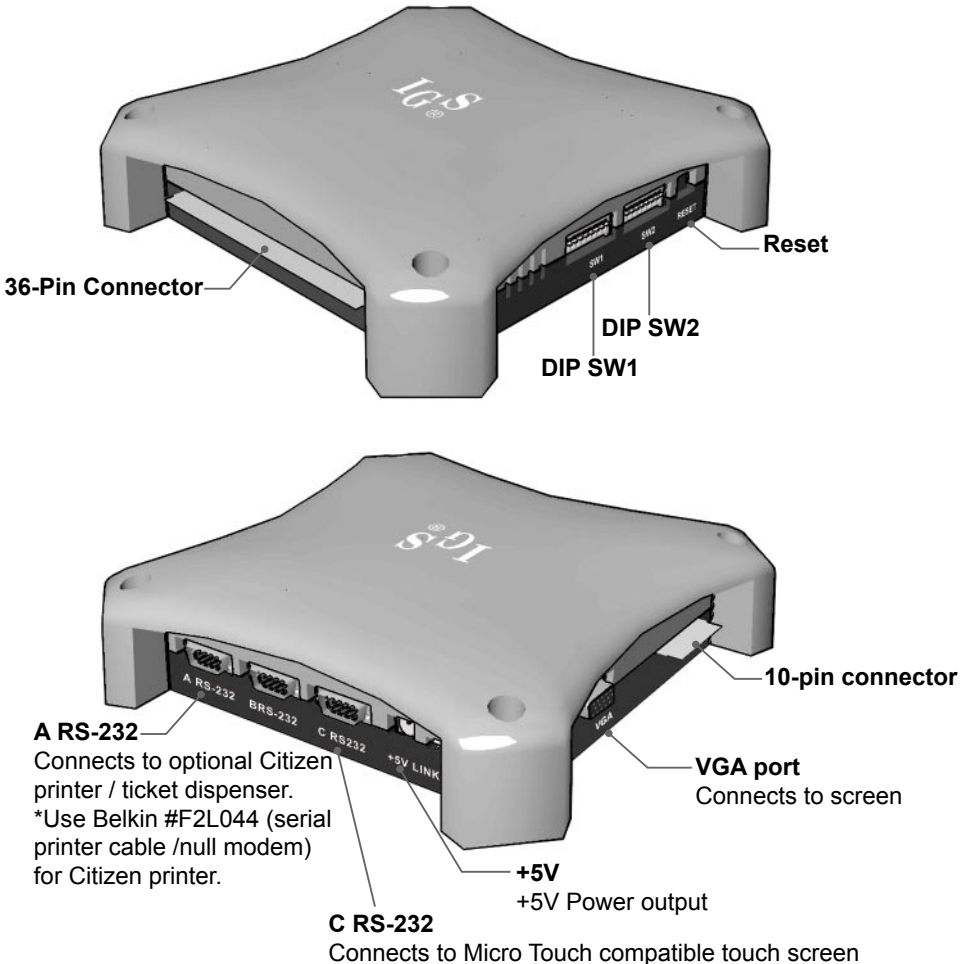
# Table of Contents

<b>1. Hardware .....</b>	<b>2</b>
Hardware Connection .....	2
Connection Diagram .....	3
DIP Switch Settings .....	4
36 & 10 PIN Button Layout .....	4
<b>2. Bookkeeping &amp; Adjustment.....</b>	<b>5</b>
Access Flow Chart.....	5
System Settings .....	6
Chance Adjustment.....	7
Touch Screen Calibration.....	7
<b>3. Game Introduction.....</b>	<b>8</b>
Features.....	8
Main Game .....	8
Double Game.....	9
Bonus Game .....	9
Holiday Party .....	11
<b>4. Payout Rules.....</b>	<b>12</b>
JACKPOT .....	12
Pay Chart.....	13
Encouraging Higher Wagers.....	13
Odds Table.....	13



# 1. Hardware

## Hardware Connection



### Remarks:

1. Printer only can be driven when connecting to the RS-232 port.
2. The interface board of ticket dispenser can be driven by connecting to the 7th pin on the Part Side of 10-pin connector.



## Connection Diagram

36 Pins		
PARTS SIDE		SOLDER SIDE
	1	
	2	
SPEAKER	3	GND
	4	
	5	
	6	
TICKET OUT	7	
TICKET SWITCH	8	
START/ALL STOP/TAKE	9	
SMALL/HELP/STOP 3	10	
PLAY/STOP 5	11	
TAKE/STOP 4	12	
DOUBLE/SELECT LINE/STOP 2	13	
	14	
	15	
BIG/HOLD PAIR/STOP 1	16	
	17	
COIN A	18	KEY IN
	19	COIN C
BOOK	20	TEST
	21	KEY OUT/PRINTER PRINT
	22	
COIN A METER	23	
KEY IN METER	24	
	25	
COIN C METER	26	
OUT METER	27	
	28	
LAMP: START/ALL STOP/TAKE	29	
LAMP: SMALL/HELP/STOP 3	30	
LAMP: PLAY/STOP 5	31	LAMP: COUNT
LAMP: TAKE/STOP 4	32	
LAMP: DOUBLE/SELECT LINE/STOP 2	33	
LAMP: HOLD PAIR/BIG/STOP 1	34	
	35	
GND	36	GND

10 Pins		
PARTS SIDE		SOLDER SIDE
GND	1	GND
GND	2	GND
+5V	3	+5V
+5V	4	+5V
+12V	5	+12V
	6	
TICKET SSR	7	
	8	
	9	
GND	10	GND

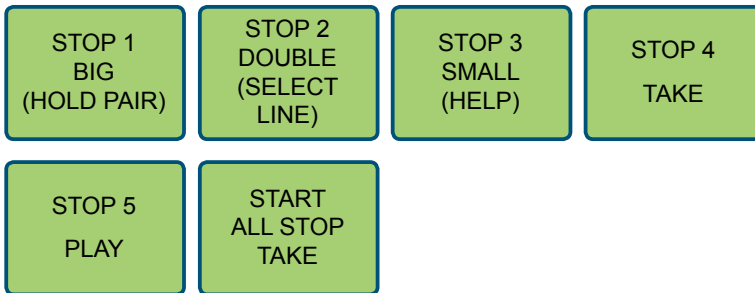


## DIP Switch Settings

DIP SWITCH 1		1	2	3	4	5	6	7	8
TOUCH FUNCTION	YES	ON							
	NO	OFF							
LINER SELECT	25		ON						
	9		OFF						

Remark: Please reset after adjusting **LINER SELECT**.

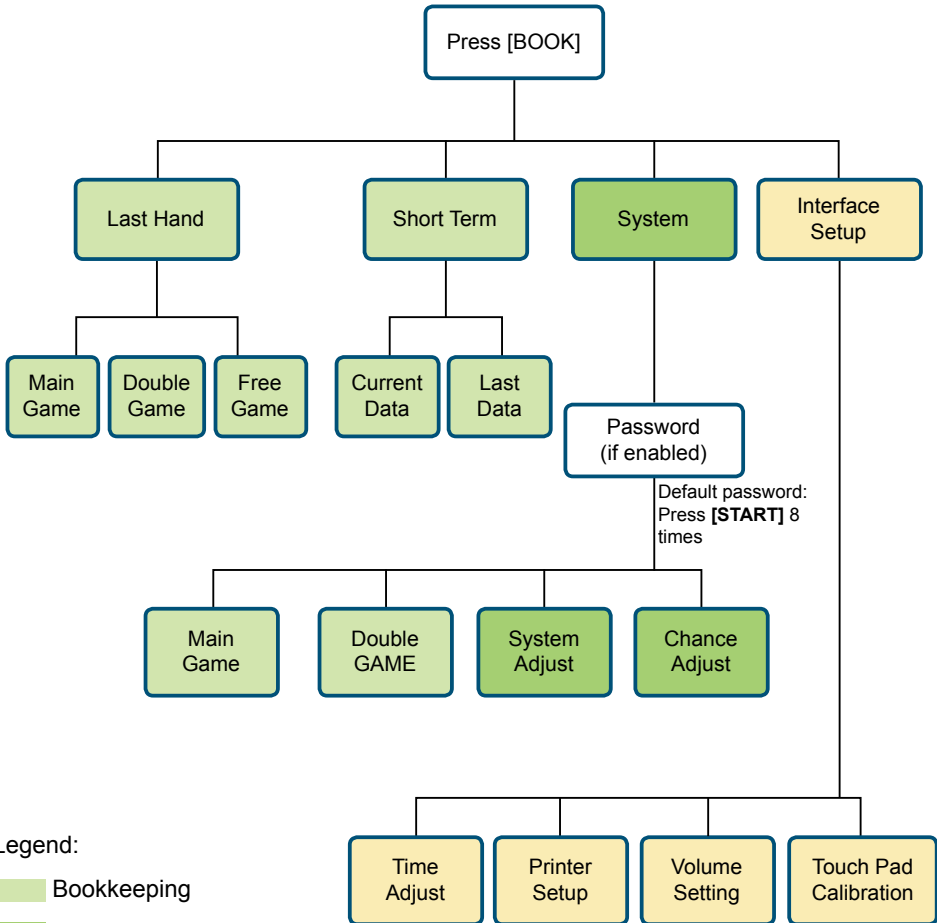
## 36 & 10 PIN Button Layout





# 2. Bookkeeping & Adjustment

## Access Flow Chart



Legend:

- Bookkeeping
- System adjustment
- Interface setup



## System Settings

ITEM	SELECTIONS	DEFAULT
MAX. LAY/LINE (25-LINE)	2, 4, 8, 10, 15, 20	4
MAX. LAY/LINE (9-LINE)	5, 10, 20, 30, 40, 50	10
MIN. PLAY/TOTAL	1, 5, 7, 9, 10, 15, 20, 25	9
MIN.PLAY FOR JACKPOT	1, 3, 5, 9, 10, 15, 18, 25	9
COIN RATE		25
KEY IN RATE	1, 2, 4, 5, 10, 15, 20, 25, 30, 40, 50, 60,	100
KEY OUT RATE	75, 80, 100, 200, 250, 400,500, 1000	1
TICKET RATE		500
GAME TICKET	1, 2, 3, 4, 5, 8, 10, CONTINUOUS	CONTINUOUS
INTERFACE	DISPENSER, PRINTER, ATTENDANT	DISPENSER
PRINTER COMMAND	CBM 1 - ESC / POS - STAR	CBM 1
PASSWORD	NO, YES	NO
SYSTEM LIMIT	NO, YES	NO
AUTO TICKET	NO, YES	NO
DEMO MUSIC	NO, YES	YES
NON STOP	NO, YES	NO
DOUBLE GAME	NO, YES	YES
ODDS TABLE	NO, YES	YES
SCORE BOX	NO, YES, 10X	NO
PLAY SCORE	NO, YES	YES
HAND COUNT	NO, YES	NO
HOLD PAIR	NO, YES	YES
AUTO PLAY	NO, YES	YES
Onscreen Volume Setting	NO, YES	NO

Remark: Default Password of System Setup: pressing **[START]** 8 times

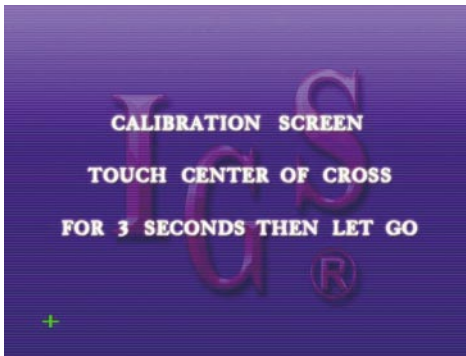




## Chance Adjustment

ITEM	SELECTIONS	DEFAULT
MAIN GAME LEVEL	LEVEL 1 (easiest), LEVEL 2, LEVEL 3, LEVEL 4, LEVEL 5, LEVEL 6 (hardest)	LEVEL 6
W-UP GAME LEVEL	95%, 90%, 85%	95%

## Touch Screen Calibration



1. Press **[BOOK]** and follow the on-screen prompts to enter the calibration screen.
2. Touch center of the cross on the screen for 3 seconds.
3. Follow the cross when it moves till the calibration is completed.



## 3. Game Introduction

### Features

- 9/25-liner adjustable.
- Max. Win up to 500,000 points.
- 3 sets of Progressive Jackpots.
- All same excitement.
- Higher wagers encouragement with extra pay lines or double win on certain lines.
- Hold Pair Feature: Select the desired Hold Symbol and Re-spin the symbols you don't want. Press Hold-Pair button to swap the Symbols.
- Free games will be triggered randomly.
- Touch screen / Auto play supported.

### Main Game

Holiday Party is a 15-reel & 9/25-liner game with 3 different bonus games.





## Free Game



Player enters Free Game randomly and exits when there is no win.

## Double Game

After winning the Main game or Bonus game, player can press **[DOUBLE UP]** button to play Double game.



- Player selects any one card from the lower deck. Then choose whether the next card will be "higher" (big button) or "lower" (small button) than card value above selection.

## Bonus Game



When the screen displays a line of 3, 4 or 5 bonus symbols, players can enter a Bonus Game corresponding to the displayed symbol.



## Bonus Game 1 – Christmas



- Press **[START]** to stop the spinning gift wheel. Scores are awarded based on what gift the wheel stops on.
- The game ends when the player hits the EXIT symbol.

## Bonus Game 2 – Thanksgiving Day



- The player selects one of the covered dishes to put it in the oven. Scores are based on what type of food comes out of the oven.
- The player can select "**Take**" to end the game, or "**Retry**" to bake another dish.

## Bonus Game 3 – Chinese New Year



- The player (Lion) will move the corresponding number of steps as the reel shows. Score are awarded according to the objects the Lion collects on the path.
- The game ends when the player completes the map.



# Holiday Party

If Main Game screen shows a diagonal made up of all of the same symbols, players will automatically enter the diagonal Re-Spin and have a chance to win ALL SAME.

The Three Diagonal Patterns :



All same odds

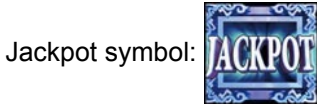


Screen of all same



## 4. Payout Rules

### JACKPOT



#### Five-in-line

LINER	CRITERIA	WIN
9	Total Play $\geq$ 45	Jackpot 1 shown on screen
	Total Play $\geq$ Min. Play for JP	Jackpot 1 shown on screen
25	Total Play $\geq$ 50	Jackpot 1 shown on screen
	Total Play $\geq$ Min. Play for JP	Jackpot 1 shown on screen

#### Four-in-line

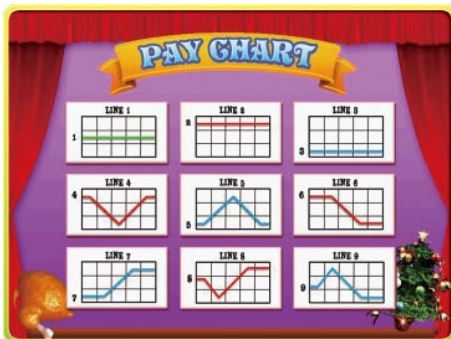
LINER	CRITERIA	WIN
9	Total Play $\geq$ 45	Jackpot 2 shown on screen
	Total Play $\geq$ Min. Play for JP	Jackpot 2 shown on screen
25	Total Play $\geq$ 50	Jackpot 2 shown on screen
	Total Play $\geq$ Min. Play for JP	Jackpot 2 shown on screen

#### Three-in-line

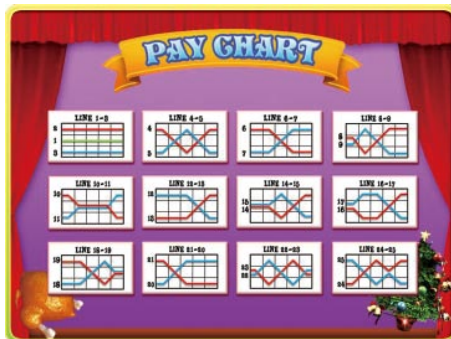
LINER	CRITERIA	WIN
9	Total Play $\geq$ 45	Jackpot 3 shown on screen
	Total Play $\geq$ Min. Play for JP	Jackpot 3 shown on screen
25	Total Play $\geq$ 50	Jackpot 3 shown on screen
	Total Play $\geq$ Min. Play for JP	Jackpot 3 shown on screen



## Pay Chart



Line-up Pattern: 9-liner

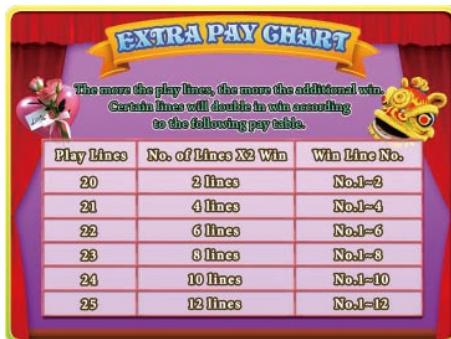


Line-up Pattern: 25-liner

## Encouraging Higher Wagers



Line-up Pattern: 9-liner



Line-up Pattern: 25-liner

## Odds Table



Line-up Pattern: 9-liner



Line-up Pattern: 25-liner



**IGS** INTERNATIONAL GAMES SYSTEM CO.,LTD.  
TEL:886-2-2299 4692 FAX:886-2-2299 4687 <http://sales.igs.com.tw>